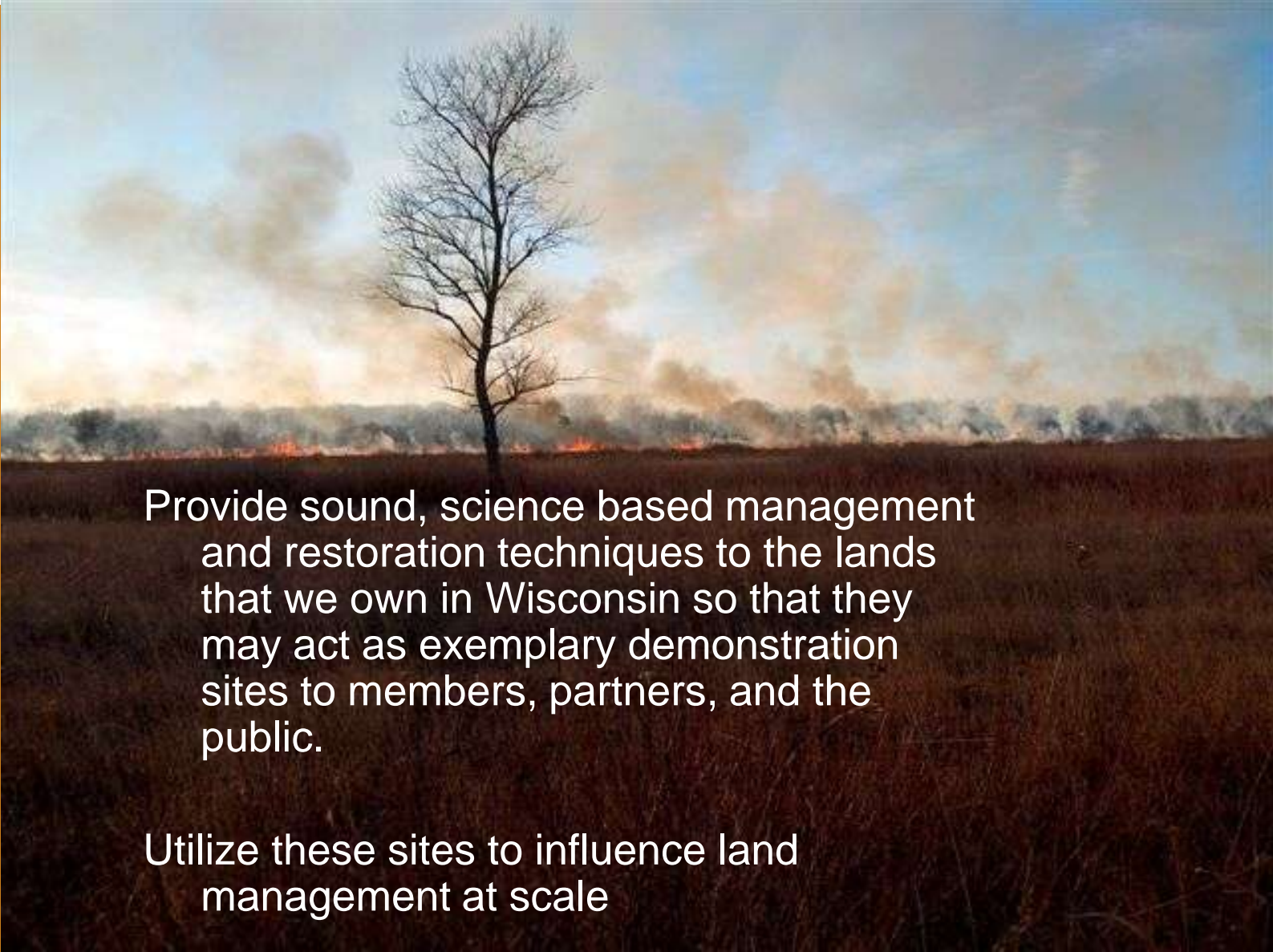


# February 25, 2011: Gathering Waters Land Trust Retreat



Hannah Spaul: Director of Land Management  
The Nature Conservancy: [hspaul@tnc.org](mailto:hspaul@tnc.org)

## Land Management Mission



Provide sound, science based management and restoration techniques to the lands that we own in Wisconsin so that they may act as exemplary demonstration sites to members, partners, and the public.

Utilize these sites to influence land management at scale

## Where we work (and where we don't)

About 26,000 Acres

Mukwonago: 1400 acres

Baraboo: 8000 acres (+1000  
easement acres)

MRPHA: 1500 acres

Door County: 4000 acres

Border Lakes: 3000 acres

Other important projects  
sites; Spring Green (1000);  
Quincy Bluff(1600); Caroline  
Lake (1000);Page Creek  
(600); Chiwaukee (1000)



## Stewardship History




1976: Emily Early starts the Chapter's Preserve Stewardship Committee.

1982: 1<sup>st</sup> Stewardship staff hired

2011: A team of stewardship is dedicated to land management in cooperation with volunteers, partners and contractors.



- 
- 15-20 burns a year
  - 20 – 250 acres in size
  - On average 1,000 acres a year
  - Staff members
  - 30+ active trained volunteers

## Baraboo Hills Tree Planting

We have over 400 acres that need planting to fill in holes that cause fragmentation



## Prairie Plantings



Seed collections happens annually at many preserves for prairie restoration efforts that are on going. Huge volunteer effort.



In addition, we are able to purchase a lot of seed from the many local nurseries in the area.



## Removing

Page Creek Preserve  
February 2008



Non-native Red Pine removal  
generated over \$100,000 and  
has opened up the preserve  
for oak savannah restoration



## Invasive Brush removal – Expanding Biomass potential for our projects

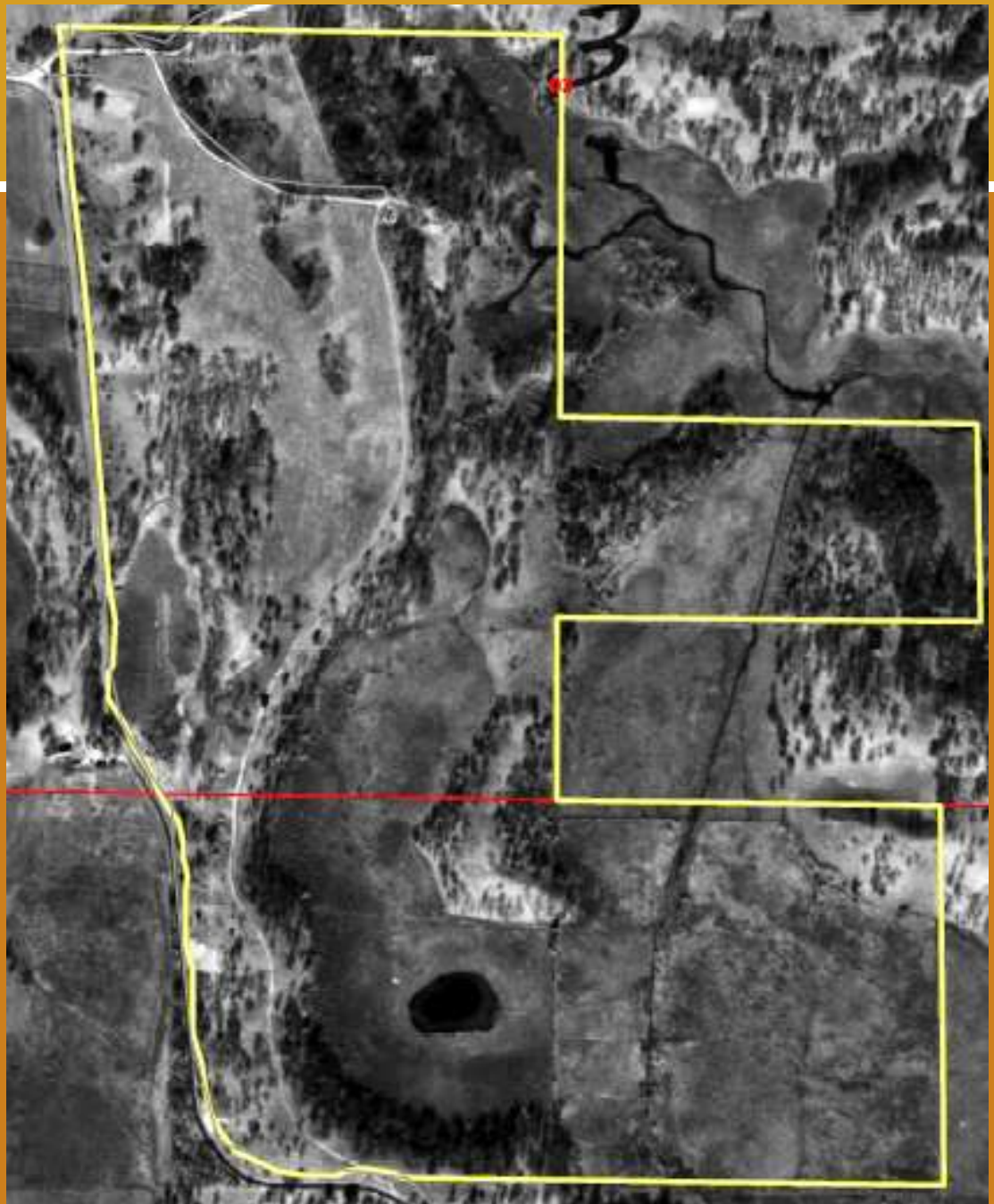




- Monitoring
- Easements Deed Restrictions & Ecological
- Land Use
  - Hunting program
  - Visitor use

1950 photo

- Pre dams
- Free flow cold water
- Small seasonal ponds
- Continuous wetland



2005 photo

Dams (installed  
~ 1956) caused  
impoundments

Water warmed  
B4 going down  
stream

Berms are old

Break in  
wetland





# Pecatonica River Restoration

