



“Preserving Door County’s Finest Open Spaces and Wild Places”

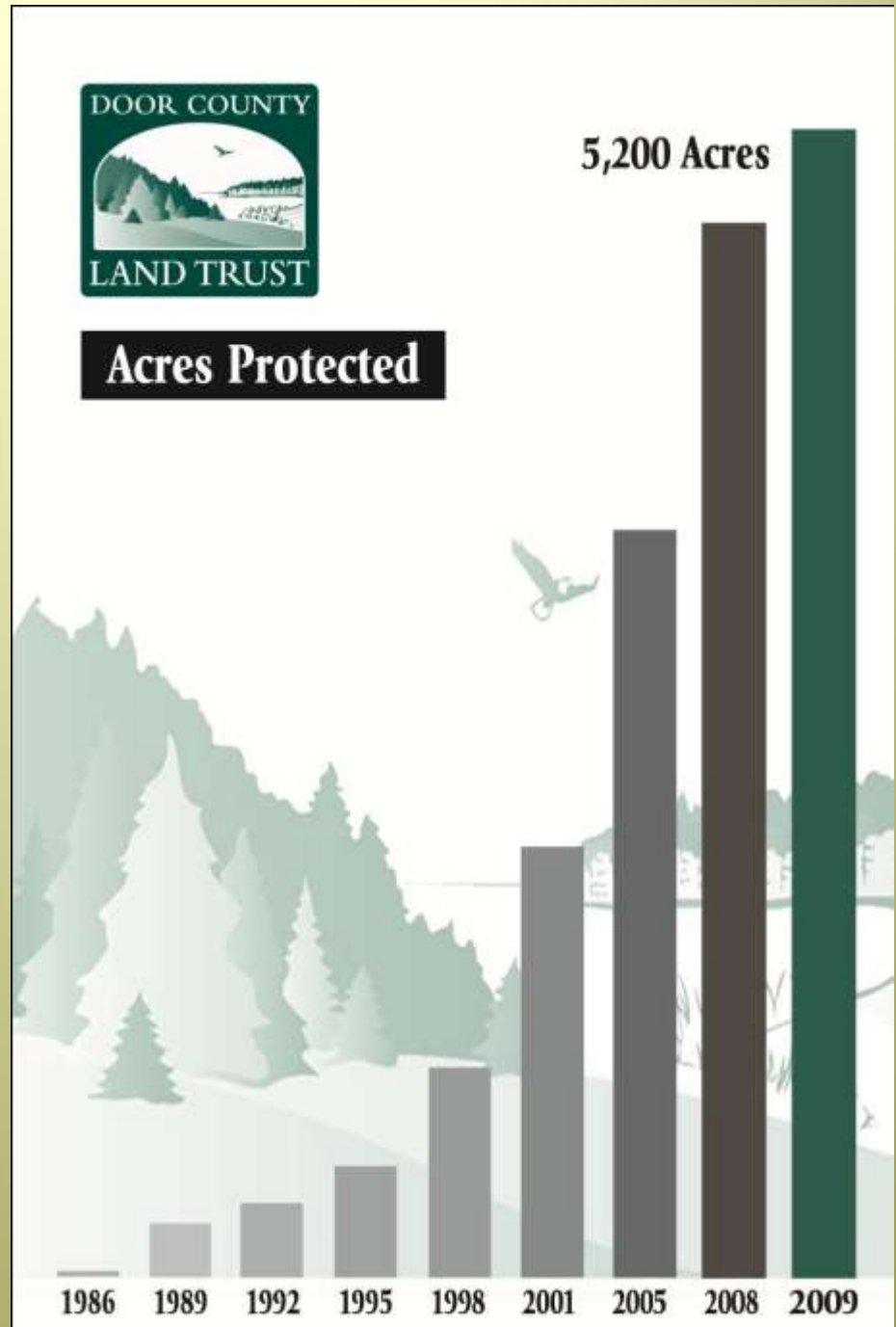


Preserving Door County's Finest Open Spaces and Wild Places...





Since 1986,
we've protected
over 5,500 acres
of Door County's
finest open
spaces and wild
places.





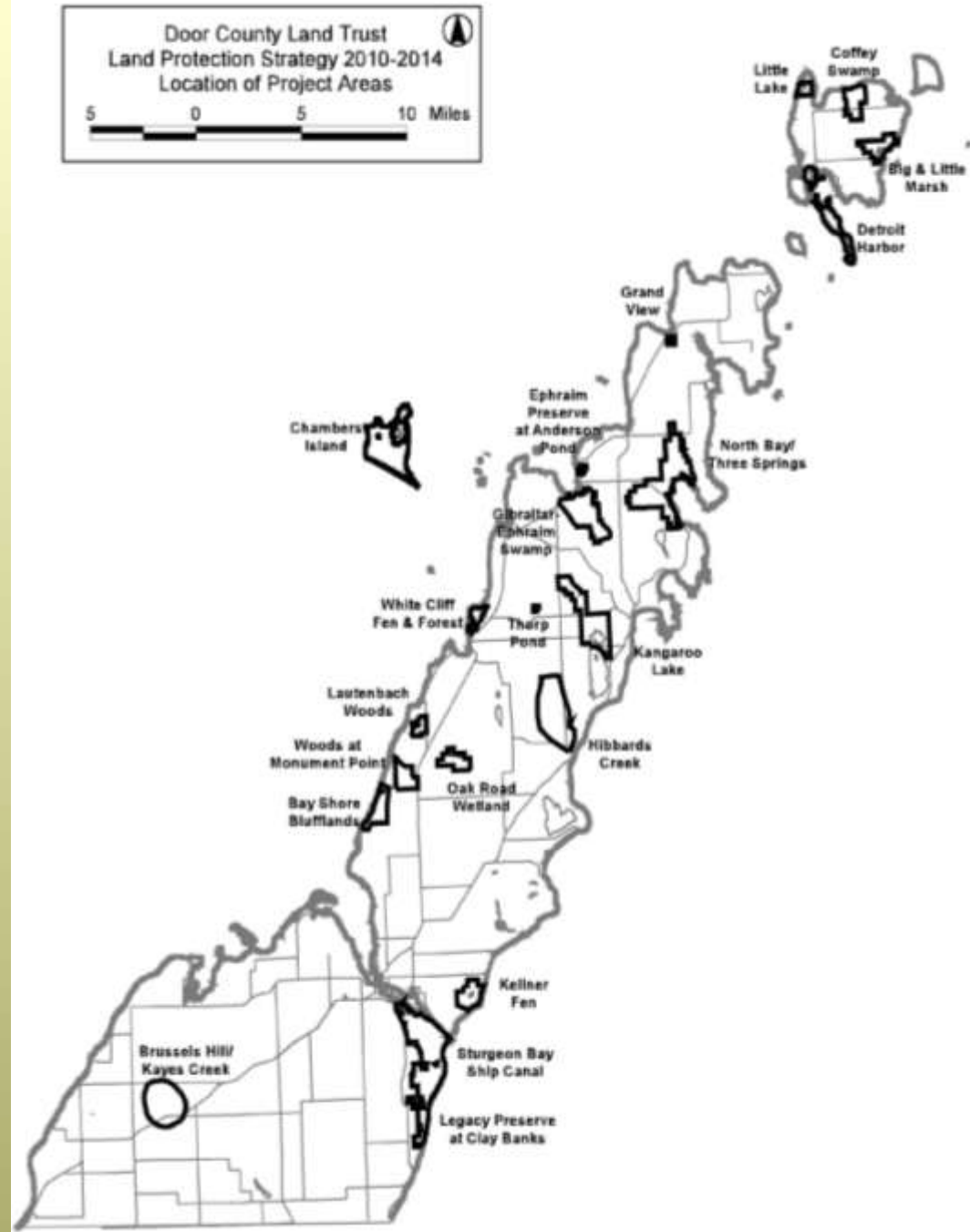
Door County Land Trust owns and manages nearly 3,000 acres throughout the county. These nature preserves are open to the public for a variety of outdoor recreational opportunities.





Areas of Focus

1. White Cliff Fen and Forest Preserve
2. Ephraim Preserve at Anderson Pond Preserve
3. Bay Shore Blufflands Nature Preserve
4. Kellner Fen Preserve
5. Oak Road Wetland Preserve
6. Detroit Harbor Preserve
7. Little Lake Preserve
8. Lautenbach Woods Preserve
9. Legacy Preserve at Clay Banks
10. Hibbards Creek Preserve
11. Picha Woods Preserve at Thorp Pond
12. Kangaroo Lake Preserve
13. Brussels Hill/Kayes Creek Preserve
14. Gibraltar-Ephraim Swamp Wildlife Corridor
15. Chambers Island
16. Three Springs Nature Preserve
17. Sturgeon Bay Ship Canal Nature Preserve
18. Woods at Monument Point Preserve
19. Big and Little Marsh
20. Coffey Swamp





Our Mission

The Door County Land Trust is a non-profit organization dedicated to preserving, *maintaining and enhancing* lands that contribute significantly to the scenic beauty and ecological integrity of Door County.





In the beginning...

- **1 PT temporary staff person**
- **Small (but enthusiastic) corps of volunteers**
- **Handful of borrowed tools**
- **Field vehicle = trunk of Ford Escort**



Components of DCLT Land Management Program

- **Preserve planning: staff**
- **Public use improvements: staff & volunteers**
- **Maintenance & monitoring: staff and volunteers**
- **Restoration: staff, volunteers and contractors**



Stewardship Volunteers: Door Stewardship Alliance and Preserve Stewards Program





Stewardship Contractors





DCLT Restoration Grant Funding Partners

- **DNR Knowles-Nelson Stewardship Fund**
- **Natural Resources Damage Assessment**
- **Lakeshore Natural Resource Partnership**
- **DNR Landowner Incentive Program**
- **US Fish & Wildlife Partners Program**
- **DNR State Wildlife Grant Program**
- **Great Lakes Restoration Initiative**



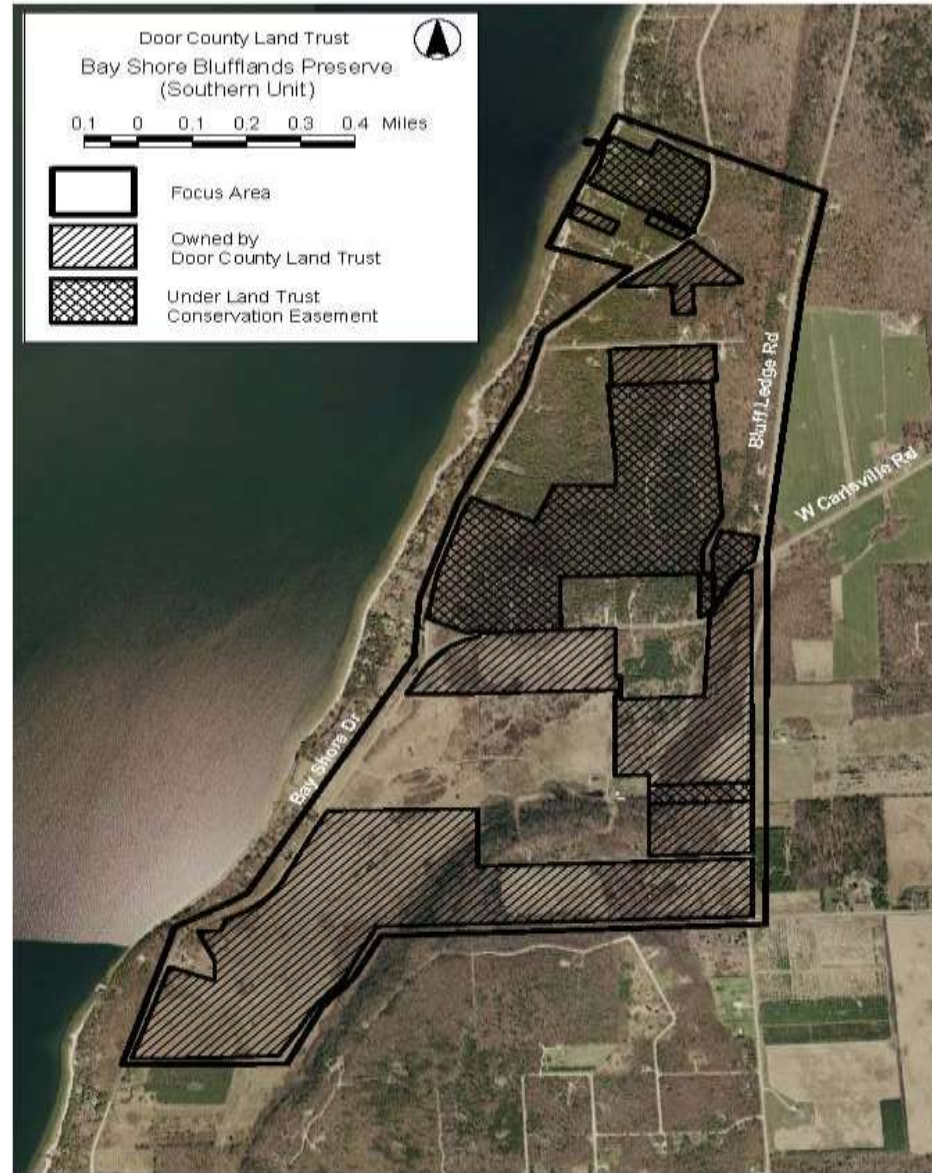
Bay Shore Blufflands Preserve







■ **Bay Shore Blufflands State Natural Area (Southern Unit)**



Bayshore Blufflands Restoration Summary



Zone	Year	Activity	Funding	Personnel
Blue outline	2004-2006	Invasives/Planting	NRDA	Contractor/Volunteers
	2011-2013	Invasives	SWG/USFW	Contractor
Red outline	2007-2010	Invasives	KN Stew/LIP	Contractor
	2013-2014	Planting	USFW	Contractor/Volunteers
Green outline	2008-2010	Invasives	LIP	Contractor
	2012-2013	Planting	USFW	Contractor/Volunteers
Magenta outline	2011-2013	Invasives	SWG/USFW	Contractor
	2014	Planting	USFW	Contractor/Volunteers
Yellow outline	2002-2011	Invasives	—	Volunteers
	2011-2013	Invasives	SWG/USFW	Contractor/Volunteers

0.1 0 0.1 0.2 Miles





Stewardship Challenges

- **Organizational Resources (\$\$\$!)**
- **Prioritizing**
- **Recruiting and Retaining Volunteers**
- **Grant Funding**
- **Contractor Capacity**



“Preserving Door County’s Finest Open Spaces and Wild Places”